



REPUBLIC OF KENYA



COUNCIL OF LEGAL EDUCATION

NATIONAL VALUES AND PRINCIPLES OF GOVERNANCE



Vision

“Innovative Legal Professionals Transforming Society”

Mission

“To ensure quality legal education through responsive regulation and administration of Bar Examination”





COUNCIL OF LEGAL EDUCATION

Quality Policy Statement

The Council of Legal Education is committed to setting standards for legal education and training, licensing of legal education providers, recognition and approval of foreign legal qualifications, and administration of credible ATP examinations in conjunction with our partners and in compliance with the legislative and regulatory framework.

The Council commits to meet the Legal and Customer requirements and to exceed the expectations of Stakeholders. This quality policy statement is communicated and availed to Customers and Stakeholders.

Core Values



Accountability



Excellence



Integrity



Inclusiveness



Innovation





COUNCIL OF LEGAL EDUCATION

Patriotism (Uzalendo)

- i. Refers to love, loyalty and devotion shown to one's country.
- ii. It calls for one's selfless services and sacrifice for the country.



Patriotism (Uzalendo)





COUNCIL OF LEGAL EDUCATION

National Unity (Umoja wa Kitaifa)

- i. It is a state of oneness which results from shared values, vision, purpose and aspirations irrespective of ethnic, cultural, economic, and religious differences.
- ii. It is a choice to work as a team in tackling the challenges Kenyans face as a Nation.



National Unity (Umoja wa Kitaifa)



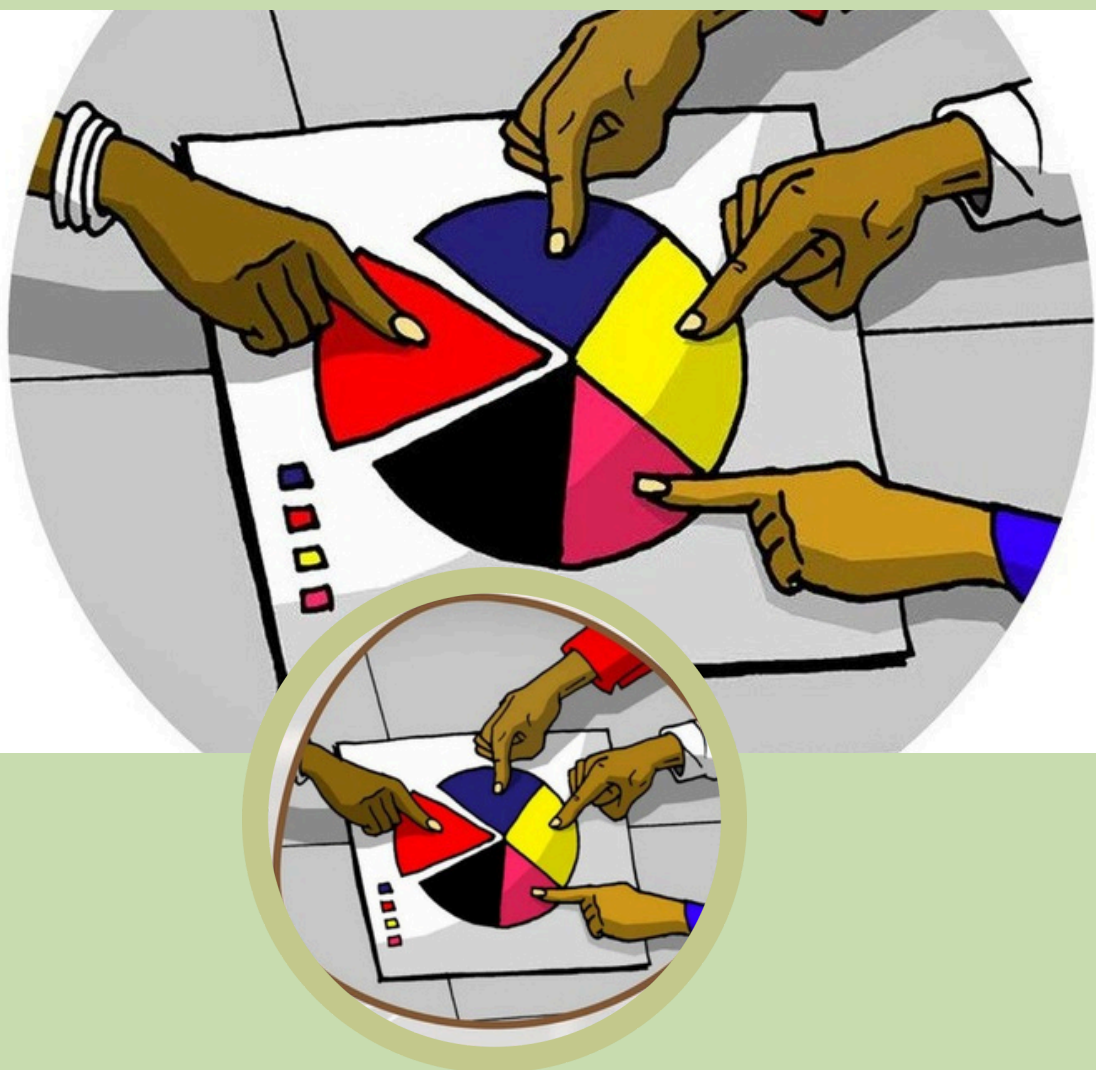


COUNCIL OF LEGAL EDUCATION

Sharing & Devolution of Power (Ugavi na Ugatuzi Mamlaka)

i. Refers to governance environment in which power, political, economic and social resources are distributed between the National and County levels of government.

ii. It empowers people at the grassroots to make decisions on matters that affect them.



Sharing & Devolution of Power (Ugavi na Ugatuzi Mamlaka)





REPUBLIC OF KENYA



COUNCIL OF LEGAL EDUCATION

Rule of Law (Utawala wa Sheria)

- i. It is the legal maxim that each citizen and person within the state should respect and observe the law.
- ii. We must all observe the law for an orderly society.



Rule of Law (Utawala wa Sheria)





COUNCIL OF LEGAL EDUCATION

Democracy & Participation of the People (Demokrasia na Ushirika wa Watu)

- i. Democracy is a political culture in which all citizens exercise direct and equal participation in the running of the affairs of their country.
- ii. Participation is the practice of involving all people in making decisions which ensures mutual respect and encourages shared responsibilities.



Democracy & Participation of the People (Demokrasia na Ushirika wa Watu)

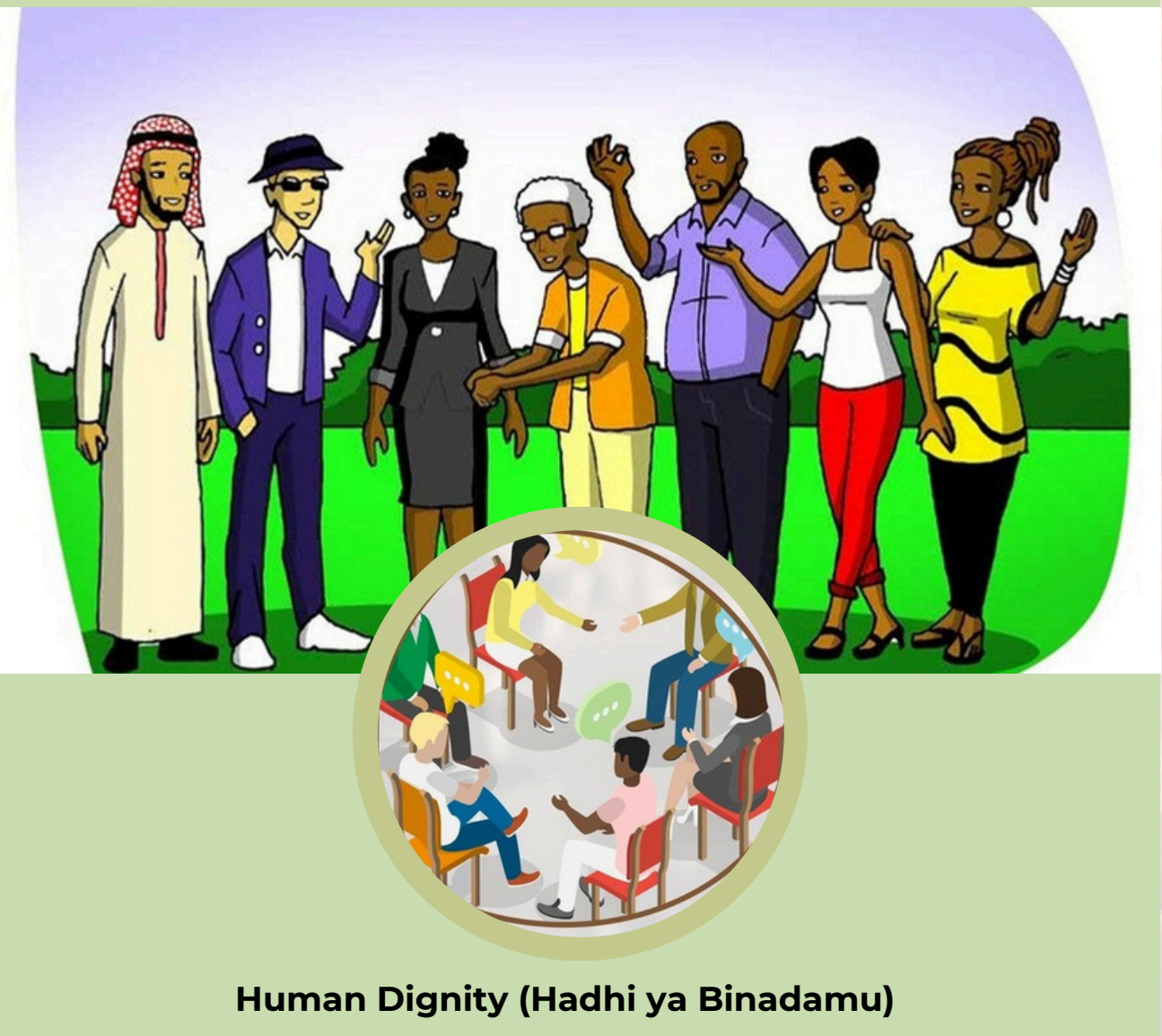




COUNCIL OF LEGAL EDUCATION

Human Dignity (Hadhi ya Binadamu)

- i. Human dignity is honor bestowed on individuals and people, and the upholding of individual rights as spelt out in the Constitution and the Bill of Rights regardless of one's status.
- ii. All humans should be treated with love and respect regardless of class, race, gender, nationality, religion or education.



Human Dignity (Hadhi ya Binadamu)



COUNCIL OF LEGAL EDUCATION

Equity (Usawa)

- i. Encompasses fairness, impartiality, justice and provision of equal access to national resources and opportunities regardless of gender, disability, age, race, ethnicity, religion or status.
- ii. It is about treating people in such a way that the outcome for each person should be the same.



Equity (Usawa)





COUNCIL OF LEGAL EDUCATION

Social Justice (Haki ya Jamii)

- i. Refers to the enjoyment of rights that enhance the wellbeing of an individual in all aspects of life.
- ii. It implies fairness in society.
- iii. It is about a society which gives individuals fair treatment and a just share of benefits.



Social Justice (Haki ya Jamii)





COUNCIL OF LEGAL EDUCATION

Inclusiveness (Uhusishwaji)

- i. Affords all people an opportunity to participate in activities including decision making which affect their life.
- ii. It makes people feel valued and essential to the success of a group.
- iii. It promotes a sense of belonging among people.



Inclusiveness (Uhusishwaji)





COUNCIL OF LEGAL EDUCATION

Equality (Ulingano)

- i. It is the treatment of everyone with equal measure irrespective of status such as gender, religion, social class, tribe or race.
- ii. It also refers to equal opportunities and obligations for all.



Equality (Ulingano)





COUNCIL OF LEGAL EDUCATION

Human Rights (Haki za Binadamu)

- i. Refers to the God-given inherent liberties and entitlements enjoyed by all people.
- ii. Includes the right to life, freedom of expression, right to health, housing, freedom from hunger, social security, education, development and self-determination.
- iii. Individuals should respect the human rights of others.



Human Rights (Haki za Binadamu)





COUNCIL OF LEGAL EDUCATION

Non-Discrimination (Kutobagua)

Is the practice of offering services and taking care of all persons without bias.



Human Rights (Haki za Binadamu)

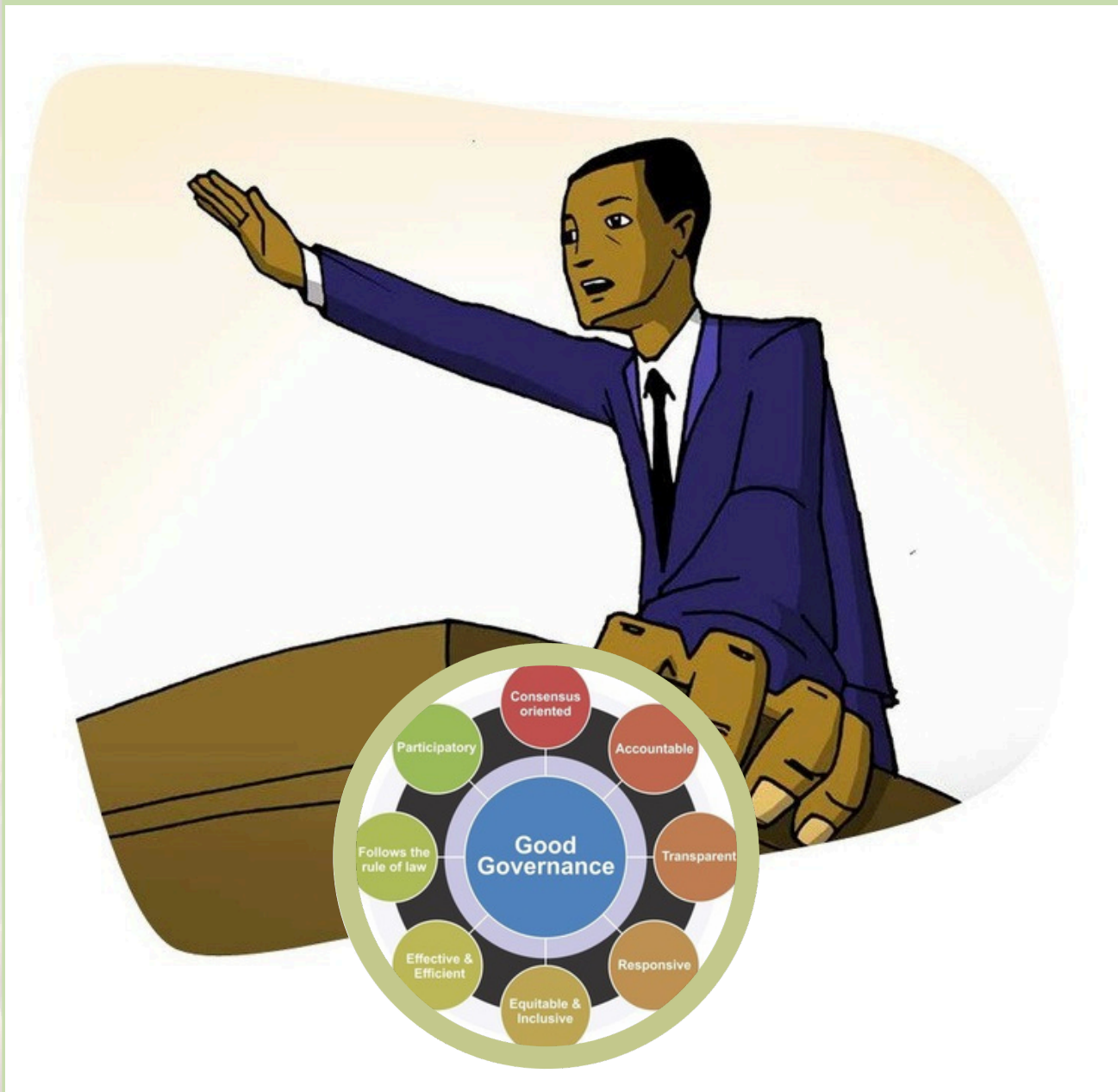




COUNCIL OF LEGAL EDUCATION

Good Governance (Utawala Bora)

- i. Refers to having systems and structures through which the exercise of power and authority can be controlled or held to account.
- ii. It is prudent management of institutions and resources by those entrusted with the responsibility of overseeing them.





COUNCIL OF LEGAL EDUCATION

Integrity (Uadilifu)

- i. It is adherence to virtuous moral and ethical principles.
- ii. Includes honesty, truthfulness, consistency and moral character both in private and public life.
- iii. It is the quality of being steadfast and consistent about what is right.
- iv. Refusal to engage in corruption and morally questionable behaviors.



Integrity (Uadilifu)





REPUBLIC OF KENYA



COUNCIL OF LEGAL EDUCATION

Transparency and Accountability (Uwazi na Uwajibikaji)

- i. Transparency refers to the requirement to share information and act in an open manner.
- ii. Accountability is the condition of being held responsible for one's actions, conduct and management of resources.



Transparency and Accountability (Uwazi na Uwajibikaji)





COUNCIL OF LEGAL EDUCATION

Sustainable Development (Maendeleo ya Kudumu)

Sustainable development is the pattern of resource use that meets the needs of the present without compromising the ability of future generations to meet their own needs.



Sustainable Development (Maendeleo ya Kudumu)





COUNCIL OF LEGAL EDUCATION

Conclusion

All CLE staff and stakeholders should adhere to the National Values and Principles of Governance as they execute their duties and obligations respectively to the Nation.



For more information, write an email to support@cle.or.ke

